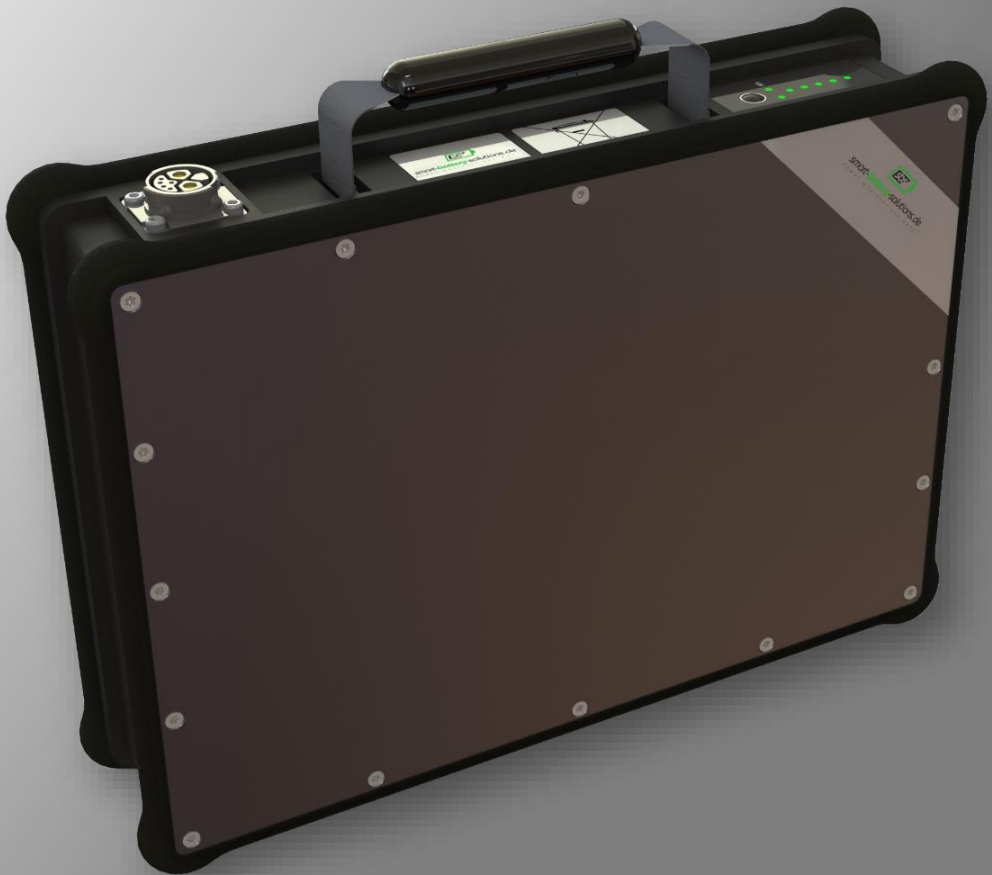




UniPower light



POWER WHEREVER YOU WANT

INTRODUCTION:

The Unipower light is the small, powerful and universal lithium battery pack from Smart Battery Solutions. Through our modular design you can configure voltage and capacity to fit your application. We are able to adapt many other special needs and requirements.

TECHNICAL DATA:

- **VOLTAGE:** 12 V, 24 V, 36 V, 48 V
- **ENERGY:** up to 1000 Wh
- **POWER:** up to 3.8 kW
- **DIMENSIONS:** 323mm x 80mm x 230mm (5.5 liter)
- **WEIGHT:** 6,1 kg (13.4 lbs)
- **SPECIALS:**
 - » Battery-Management-System (BMS)
 - » Monitor cell, PCB temperature
 - » Control charge and discharge current
 - » Automatic disconnect at under- or overvoltage
 - » Control charge and discharge current
 - » Cell-balancing
 - » CAN-Bus, UART, I²C
 - » USB-Interface for service
 - » SOC (State of Charge) display



PLASTIC FOIL KEYBOARD

- **Pushbutton**
SOC (State of charge)
ON/OFF

- **State of Charge**
5 LEDs 20% each

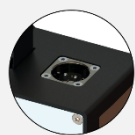
- **HV LED**
Output active

- **12V LED**
12V system runs (optionally)

SELECTABLE CONNECTORS



» **Weipu**
IP67 caps
Max. current: 60A
6 IO's pins
2 power pins

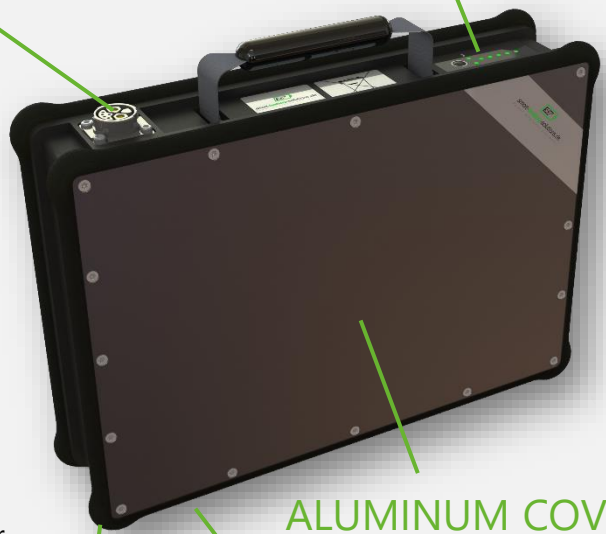


» **Rosenberger**
Magnetic locking system
Max. current: 40A
4 IO's pins
2 power pins



» **Chogori**
Industrial connector
Max. current: 50A
6 IO's pins
2 power pins

Need another connector?
Please feel free to contact us!



ALUMINUM COVER

- Choose your color!
- Custom brand

BUMPER CASE

- Frame protection

PLASTIC FRAME

- Choose your color!

YOUR ADVANTAGES:

- Modern Li-Ion technology
- Fits your application
- Battery Management System
- No development costs
- Cluster usage possible
- Personalized (Brand, Color)

APPLICATIONS:



PERFORMANCES:

- BATTERYSYSTEMS
- PRODUCTION
- DEVELOPMENT
- CELLS
- CONSTRUCTION
- CHARGER
- CONSULTING
- WORKFLOW



Smart Battery Solutions GmbH
Lindigstraße 8a
63801 Kleinostheim

Fon 0 60 27 - 99 08 130
smart-battery-solutions.de

POWER WHEREVER YOU WANT