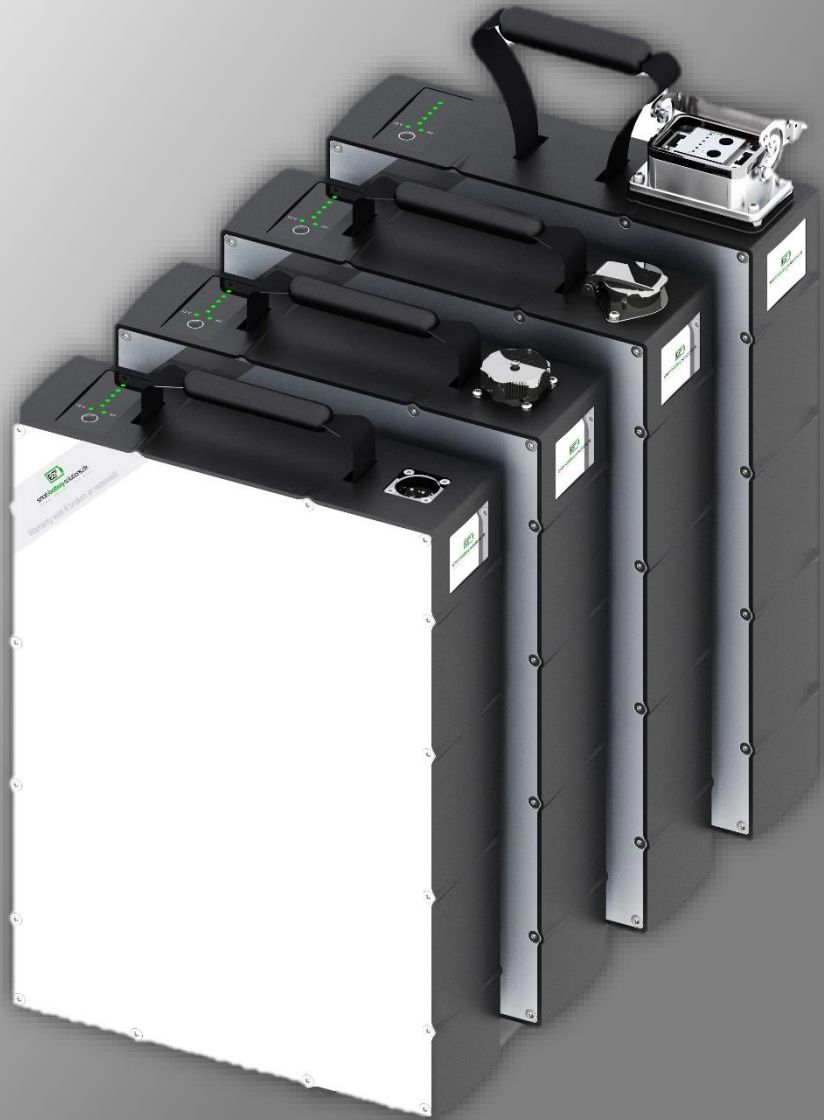




UniPower One for All



POWER WHEREVER YOU WANT



TECHNICAL DATA:

- **VOLTAGE:** 12V, 24 V, 36 V, 48 V
- **CAPACITY:** 29 Ah, 35 Ah or 40 Ah
- **ENERGY:** up to 2026 Wh
- **POWER:** up to 5000 W
- **DIMENSIONS:** 265mm x 75mm x 380mm + connector height
- **WEIGHT:** up to 11,5 kg (25 lbs)
- **SPECIALS:**
 - » Intelligent smart Battery-Management-System (BMS) to control the cell temperatures and charge- and discharge current. Automatic disconnection at under- or overvoltage. Passive Cell-Balancing.
 - » CAN-Bus
 - » USB-Interface for servicetool
 - » SOC (State of Charge) display
 - » 12 V for system demand (24 W)

YOUR BENEFITS:

- Modern Li-Ion technology
- No development costs
- Suits your application
- All-purpose battery solution
- Quickstart for your market launch
- Many configurations possible
- Different setup possibilities (BMS, connector, colors and branding)
- Cluster usage possible

PLASTIC FOIL KEYBOARD

Pushbutton

- SOC (State of charge)
- ON/OFF

HV LED

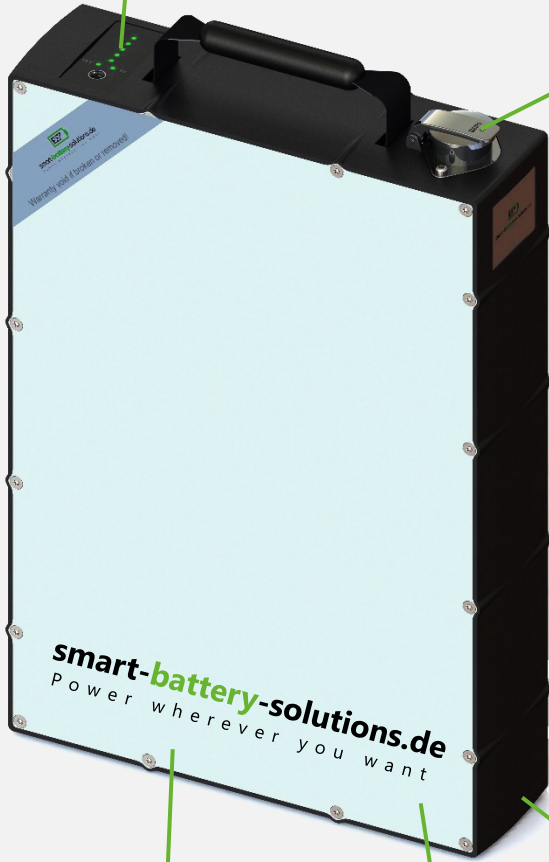
- Output active

12V LED

- 12V system runs (optionally)

State of Charge

- 5 LEDs 20% each



SELECTABLE CONNECTORS

» Weipu

Caps IP67 (mated)

Current: 60A

6 pins for data communication

2 pins for power transmission



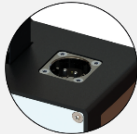
» Rosenberger

Magnetic locking system

Current: 10A, 30A, 40A;

4 pins for data communication

2 pins for power transmission



» Stäubli

Industrial connector

Current: 75A

12 pins for data communication

2 pins for power transmission



Need another connector?

Please feel free to contact us!

CUSTOM BRAND

- Might be yours!

PLASTIC FRAME

- Choose your color!

DOUBLE-SIDED ALUMINUM COVER

- Part of the cooling and sealing concept
- Choose your color!

APPLICATIONS:



PERFORMANCES:

- BATTERY SYSTEMS
- PRODUCTION
- DEVELOPMENT
- CELLS
- CONSTRUCTION
- CHARGER
- CONSULTING
- WORKFLOW



Smart Battery Solutions GmbH
Lindigstraße 8a
63801 Kleinostheim

Fon 0 60 27 - 99 08 130
smart-battery-solutions.de

POWER WHEREVER YOU WANT